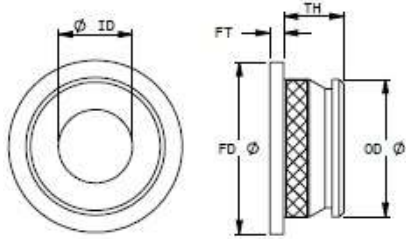


Compression Limiters

CLF

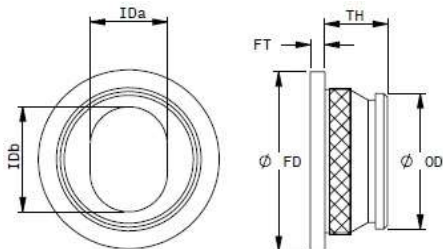


CLF - Compression Limiters with Flange and Round hole. Multiple installation options. Usage: press fit, ultrasonic, or insert mold depending on application and substrate material.



| TH | SIZE ID | OD | Qty Pkg | Item No. | FT | FD | Material | Knurled |
|---|-------------|--------------|---------|------------------|------------|---------------|-----------------------------|---------|
| CLFR - Compression Limiters Brass material with Flange base and Round hole | | | | | | | | |
| 5 .196 | 9 .354 | 12.4 .488 | 100 | 805086 | 1 .04 | 18.00 .708 | Brass | Yes |
| 5 .196 | 10 .393 | 15.0 .590 | 100 | 805093 | 2 .08 | 20.00 .787 | Steel Zinc Nickel Plated | No |
| 5 .196 | 11 .393 | 15.0 .590 | 100 | 805093-01 | 2 .08 | 20.00 .787 | Steel Zinc Nickel Plated | No |
| 5 .196 | 7 .276 | 12.4 .488 | 100 | 805113 | 1 .04 | 15.40 .787 | Brass | Yes |
| 6.5 .255 | 8 .315 | 14.1 .558 | 100 | 805068 | 1.5 .06 | 18.75 .738 | Brass | Yes |
| 6.5 .255 | 8 .315 | 14.1 .558 | 100 | 805073 | 1.5 .06 | 18.75 .738 | Steel Zinc Plated | Yes |
| 7 .275 | 11 .393 | 15.0 .590 | 100 | 805093-02 | 2 .08 | 20.00 .787 | Steel Zinc Nickel Plated | No |
| 8 .315 | 9.3 .366 | 12.4 .488 | 100 | 805097 | 1 .04 | 18.00 .708 | Brass | Yes |
| 10 .393 | 7 .276 | 12.4 .488 | 100 | 805072 | 1 .04 | 18.00 .708 | Brass | Yes |
| 10 .393 | 9.3 .366 | 12.4 .488 | 100 | 805082 | 1 .04 | 18.00 .708 | Brass | Yes |
| 10 .393 | 9.3 .366 | 14.5 .573 | 100 | 805079 | 1 .04 | 20 .787 | Brass | Yes |

CLFO



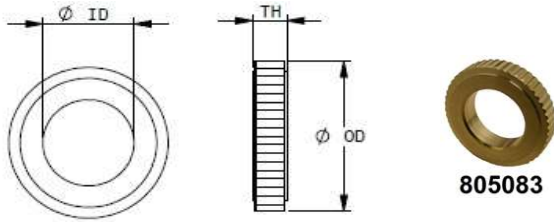
CLFO - Compression Limiters with Flange and Oval hole. Multiple installation options. Usage: press fit, ultrasonic, or insert mold depending on application and substrate material.



| TH | SIZE ID-Small | ID-Big | OD | Qty Pkg | Item No. | FT | FD | Material |
|---|---------------|------------|--------------|---------|---------------|------------|------------|----------------------|
| CLFR - Compression Limiters Brass material with Flange base and Round hole | | | | | | | | |
| 6.5 .255 | 8 .315 | 11 .433 | 14.2 .559 | 100 | 805060 | 1.5 .06 | 19 .748 | Brass |
| 6.5 .255 | 8 .315 | 11 .433 | 14.2 .559 | 100 | 805074 | 1.5 .06 | 19 .748 | Steel Zinc Plated |

Compression Limiters

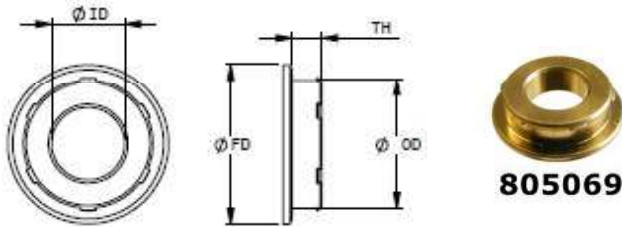
CLR



CLR - Compression Limiters with Round hole. Multiple installation options. Usage: press fit, ultrasonic, or insert mold depending on application and substrate material.

| TH | SIZE ID | OD | Qty Pkg | Item No. | Material |
|---|---------|------|---------|----------|----------|
| CLFR - Compression Limiters Brass material with Flange base and Round hole | | | | | |
| 3 | 8 | 14 | 100 | 805083 | Brass |
| .118 | .315 | .551 | | | |

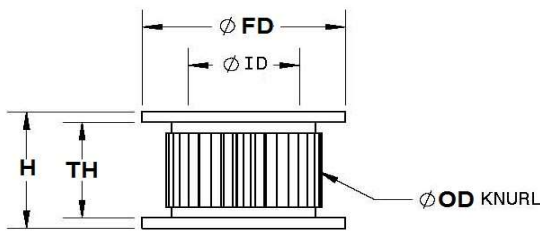
CLP



CLP - Compression Limiters Push-in type are designed to push-into substrate material by hand or fixture with minimal force. The parts will not dislodge or drop out during handling and will not rotate when bolt is tightened. This product is an excellent choice to keep assembly run-rate high while keeping tooling and cost of install low as compared to insert molding or ultrasonic assembly.

| TH | SIZE ID | OD | Qty Pkg | Item No. | FD | Material |
|---|---------|------|---------|----------|------|----------|
| CLFR - Compression Limiters Brass material with Flange base and Round hole | | | | | | |
| 3 | 7 | 12.4 | 100 | 805069 | 15.4 | Brass |
| .118 | .276 | .488 | | | .606 | |

CLDF



CLDF - Compression Limiters Double Flange are designed to be insert molded into substrate material. This are used in applications that will experience high vibration and high loads. These are also available without knurling in hardened steel with high performance coatings for use as bushings and rollers.



| TH | SIZE ID | OD | H | FD | Qty Pkg | Item No. | Material | Knurled |
|--|---------|------|------|------|---------|----------|-------------|---------|
| CLDF - Compression Limiters Double Flange | | | | | | | | |
| 9 | 9 | 13 | 11 | 15.4 | 100 | 805071 | Steel | Yes |
| .354 | .354 | .511 | .433 | .606 | | | Zinc Plated | |